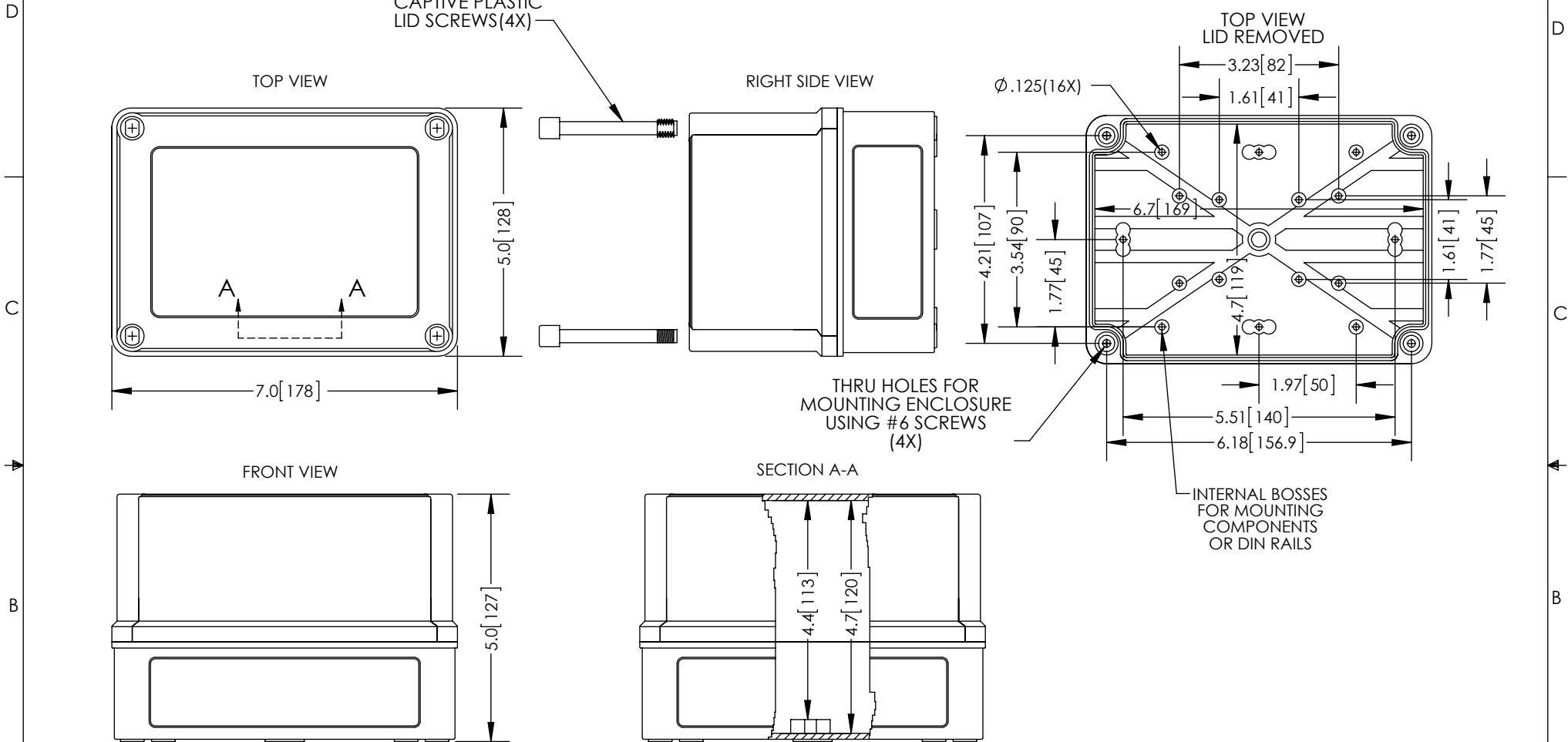


THE INFORMATION CONTAINED IN THIS DRAWING IS THE SOLE PROPERTY OF L-COM, INC. ANY REPRODUCTION IN PART OR WHOLE WITHOUT THE WRITTEN PERMISSION OF L-COM, INC. IS PROHIBITED.

REVISIONS			
REV	DESCRIPTION	DATE	APPROVED
A	INITIAL RELEASE	2/19/13	D.GRIFFIN



- NOTE:
- ENCLOSURE MATERIAL-GRAY (RAL7035)
VALOX® 357U THERMOPLASTIC POLYESTER
 - NEMA RATED TYPE 3, 3R, 3S, 4, 4X, 12 AND 13
PRIOR TO MODIFICATIONS.
 - IEC 529 RATED IP 66 PRIOR TO MODIFICATION.
 - HEAT DEFLECTION TEMPERATURE UP TO 138 DEG C.
 - ENCLOSURES ARE MAINTENANCE FREE AND
CORROSION RESISTANT.
 - SHALL BE PACKAGED AS PER L-COM SPEC PKG-00095
 - ALL DIMENSIONS FOR REFERENCE ONLY

RoHS Compliant ✓

UNLESS OTHERWISE SPECIFIED, DIMENSIONS ARE IN INCHES [mm] DIMENSIONAL TOLERANCES: .X = ±.1 .XX = ±.01 .XXX = ±.005 ANGULAR TOLERANCES: ALL = ± 1° PROJECTION 	APPROVALS		DATE		 45 BEECHWOOD DRIVE NORTH ANDOVER, MA 01845
	DRAWN BY B.PUCHASKI		2/13/13		
	CHECKED BY P.PESA		2/13/13		
	APPROVED BY P.PESA		2/13/13		
					CATEGORY
					ENCLOSURE
CONFIGURATION DETAILS OF UNDIMENSIONED FEATURES MAY VARY					PRODUCT DESCRIPTION
					PBT NEMA ENCLOSURE - 7 X 5 X 5 SCREW COVER
COLOR VARIATIONS MAY OCCUR		SIZE A	FSCM NO. 43321	DWG. NO. NBV755	REV. A
		SCALE: NONE			CAD FILE: NBV755.SLDDRW
		SHEET 1 OF 1			