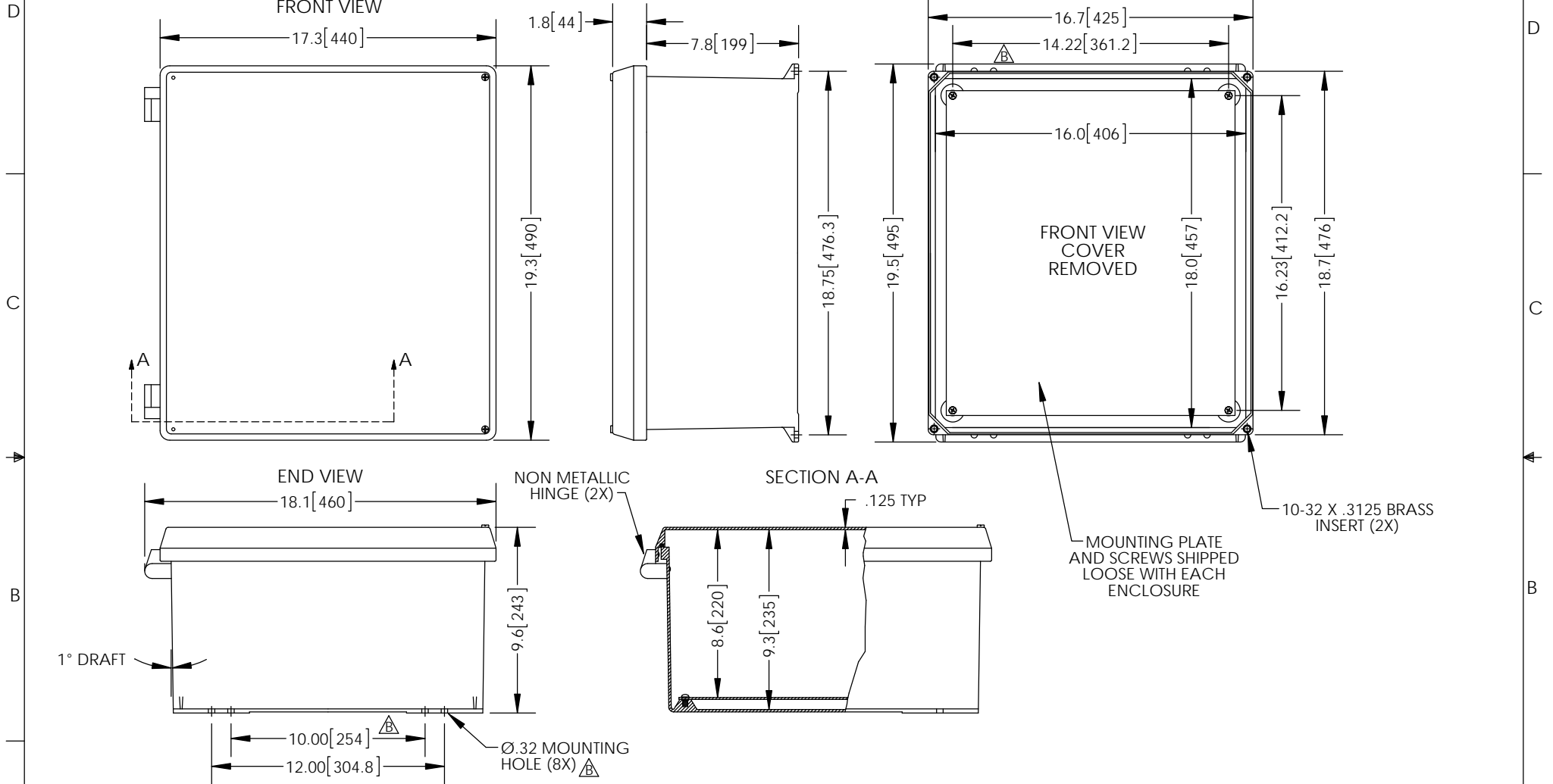


THE INFORMATION CONTAINED IN THIS DRAWING IS THE SOLE PROPERTY OF L-COM, INC. ANY REPRODUCTION IN PART OR WHOLE WITHOUT THE WRITTEN PERMISSION OF L-COM, INC. IS PROHIBITED.

REVISIONS			
REV	DESCRIPTION	DATE	APPROVED
A	INITIAL RELEASE	01/10/13	D.GRIFFIN
B	ECN 7764 UPDATE PER VENDOR SPECS	01/27/15	B.PUCHASKI



**NOTE:**

- 1- ENCLOSURE MATERIAL-GRAY (RAL7035) HOT MOLDED FIBERGLASS REINFORCED POLYESTER
- 2- NEMA RATED TYPE 3, 3R, 3S, 4, 4X, 12 AND 13 PRIOR TO MODIFICATIONS.
- 3- IEC 529 RATED IP 66 PRIOR TO MODIFICATION.
- 4- TEMPERATURE RANGE FROM -50 DEG C TO 150 DEG C.
- 5- SELF EXTINGUISHING AND HALOGEN FREE
- 6- ENCLOSURES ARE MAINTENANCE FREE AND CORROSION RESISTANT.
- 7- SHALL BE PACKAGED AS PER L-COM SPEC PKG-00070
- 8- ALL DIMENSIONS FOR REFERENCE ONLY

**REGULATORY COMPLIANCE:**  
CE2011/65/EU(RoHS DIRECTIVE)

UNLESS OTHERWISE SPECIFIED, DIMENSIONS ARE IN INCHES [mm]  DIMENSIONAL TOLERANCES: .X = ±.1 [2.54] .XX = ±.01 [.25] .XXX = ±.005 [.13]  ANGULAR TOLERANCES: ALL = ± 1°  PROJECTION 	APPROVALS	DATE	 45 BEECHWOOD DRIVE NORTH ANDOVER, MA 01845	
	DRAWN BY B.PUCHASKI	01/10/13		
	CHECKED BY P.PESA	01/10/13	CATEGORY ENCLOSURE	
	APPROVED BY P.PESA	01/10/13	PRODUCT DESCRIPTION FRP NEMA ENCLOSURE 18 X 16 X 8 NM HINGE W/SCREW COVER AND ALUMINUM MNT PLATE	
CONFIGURATION DETAILS OF UNDIMENSIONED FEATURES MAY VARY		SIZE <b>A</b>	FSCM NO. <b>43321</b>	DWG. NO. NBN181608-KIT
COLOR VARIATIONS MAY OCCUR		SCALE: NONE	CAD FILE: NBN181608-KIT.SLDDRW	REV. <b>B</b>
		SHEET 1 OF 1		