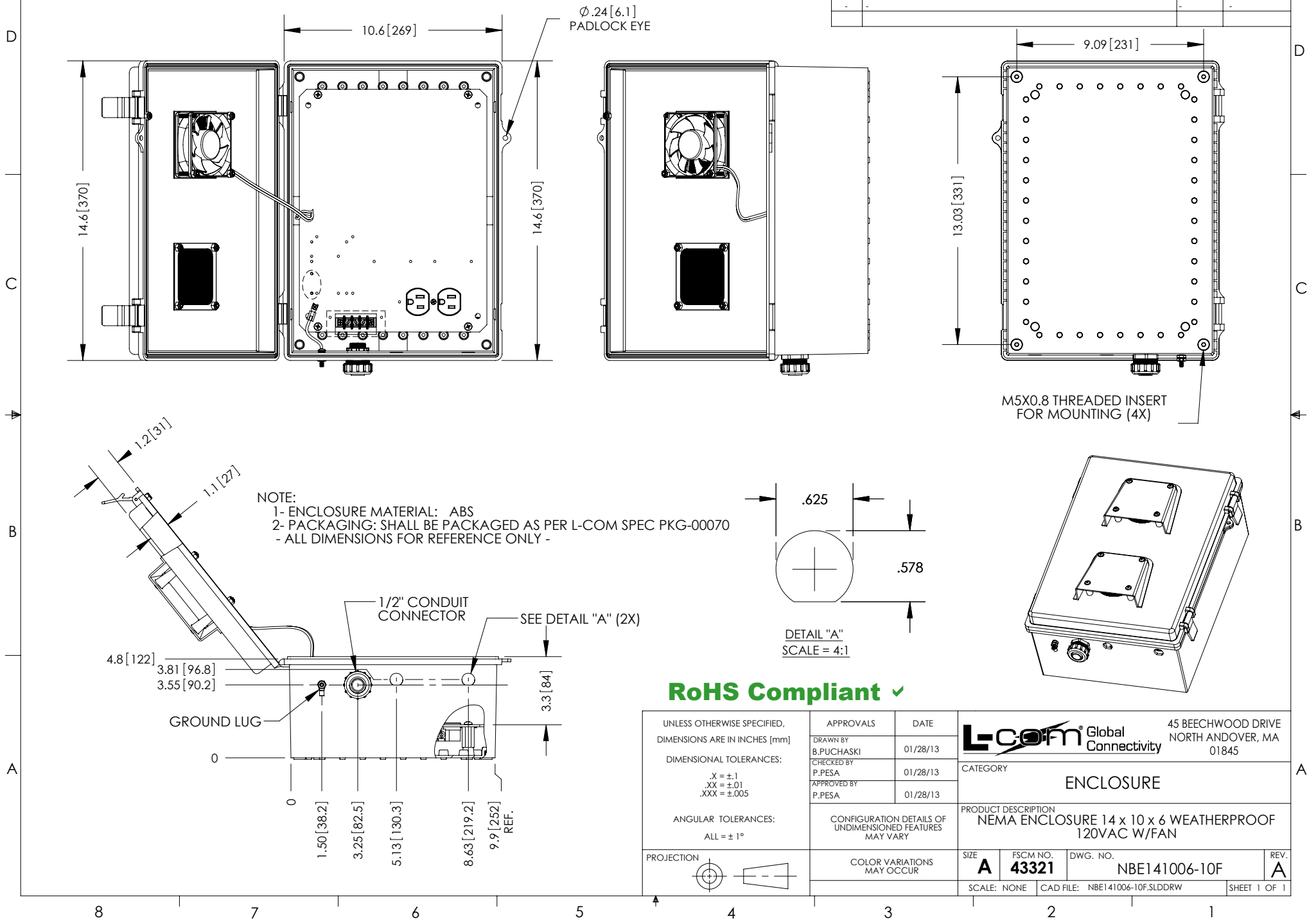


THE INFORMATION CONTAINED IN THIS DRAWING IS THE SOLE PROPERTY OF L-COM, INC. ANY REPRODUCTION IN PART OR WHOLE WITHOUT THE WRITTEN PERMISSION OF L-COM, INC. IS PROHIBITED.

REVISIONS			
REV	DESCRIPTION	DATE	APPROVED
A	INITIAL RELEASE	1/29/13	D.GRIFFIN
-	-	-	-
-	-	-	-



RoHS Compliant ✓

UNLESS OTHERWISE SPECIFIED, DIMENSIONS ARE IN INCHES [mm] DIMENSIONAL TOLERANCES: .X = ±.1 .XX = ±.01 .XXX = ±.005 ANGULAR TOLERANCES: ALL = ± 1° PROJECTION	APPROVALS	DATE	L-com Global Connectivity 45 BEECHWOOD DRIVE NORTH ANDOVER, MA 01845
	DRAWN BY B.PUCHASKI	01/28/13	
	CHECKED BY P.PESA	01/28/13	
	APPROVED BY P.PESA	01/28/13	
CONFIGURATION DETAILS OF UNDIMENSIONED FEATURES MAY VARY	CATEGORY		ENCLOSURE
	PRODUCT DESCRIPTION		NEMA ENCLOSURE 14 x 10 x 6 WEATHERPROOF 120VAC W/FAN
	COLOR VARIATIONS MAY OCCUR		
SIZE		FSCM NO.	DWG. NO.
A		43321	NBE141006-10F
SCALE: NONE		CAD FILE: NBE141006-10F.SLDRW	SHEET 1 OF 1