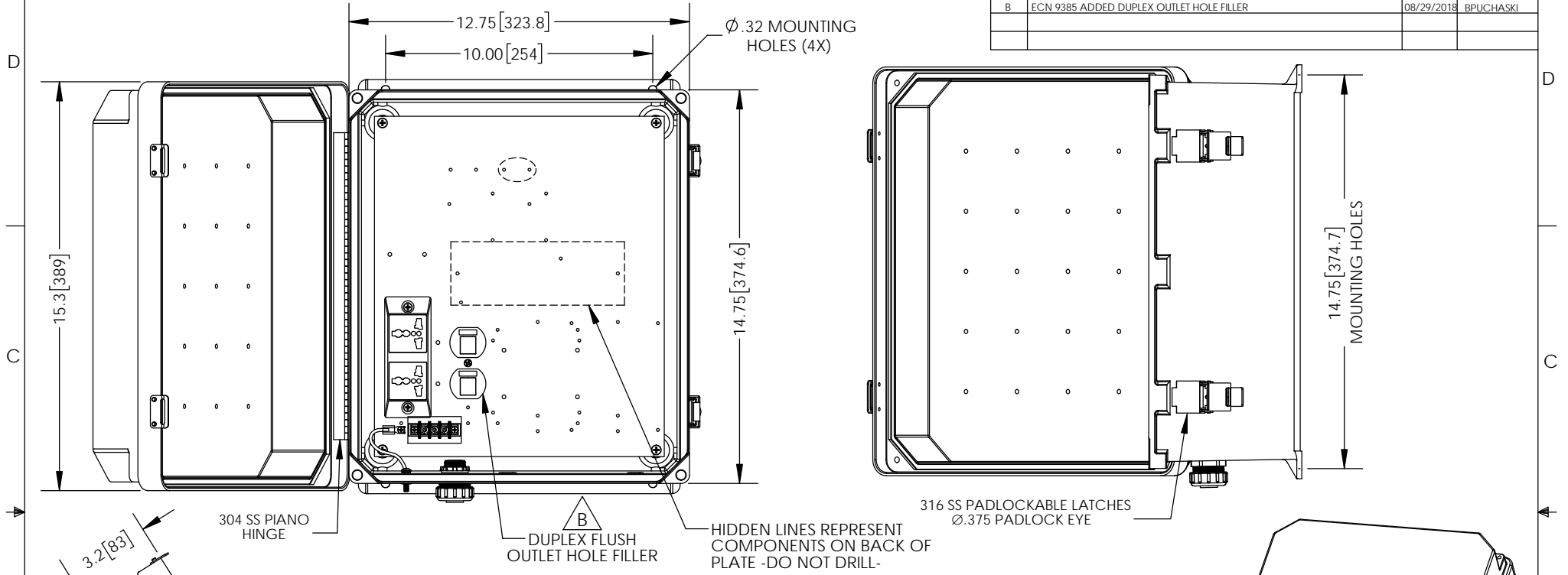


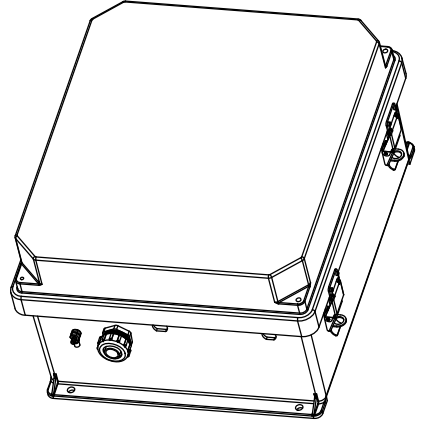
THE INFORMATION CONTAINED IN THIS DRAWING IS THE SOLE PROPERTY OF L-COM, INC. ANY REPRODUCTION IN PART OR WHOLE WITHOUT THE WRITTEN PERMISSION OF L-COM, INC. IS PROHIBITED.

REVISIONS			
REV	DESCRIPTION	DATE	APPROVED
A	INITIAL RELEASE	05/22/2013	BPUCHASKI
B	ECN 9385 ADDED DUPLEX OUTLET HOLE FILLER	08/29/2018	BPUCHASKI



- NOTE:**
- ENCLOSURE MATERIAL-GRAY (RAL7035)
HOT MOLDED FIBERGLASS REINFORCED POLYESTER
 - SELF EXTINGUISHING AND HALOGEN FREE.
 - CABINETS ARE MAINTENANCE FREE AND CORROSION RESISTANT.
 - SHALL BE PACKAGED AS PER L-COM SPEC PKG-00070
 - ALL DIMENSIONS FOR REFERENCE ONLY.

REGULATORY COMPLIANCE:
CE2011/65/EU(RoHS DIRECTIVE)



UNLESS OTHERWISE SPECIFIED, DIMENSIONS ARE IN INCHES [mm]	APPROVALS	DATE	50 HIGH STREET NORTH ANDOVER, MA 01845			
	DRAWN BY BPUCHASKI	05/22/2013				
	DIMENSIONAL TOLERANCES:	CHECKED BY P.PSEA	05/22/2013	CATEGORY	ENCLOSURE	
	.X = ±.1 [2.54] .XX = ±.01 [.25] .XXX = ±.005 [.13]	APPROVED BY P.PSEA	05/22/2013	PRODUCT DESCRIPTION	NEMA ENCLOSURE 14 X 12 X 7 WEATHERPROOF UNIVERSAL 200-240VAC W/HEATER	
ANGULAR TOLERANCES: ALL = ± 1°	CONFIGURATION DETAILS OF UNDIMENSIONED FEATURES MAY VARY		SIZE	CAGE CODE	DWG. NO.	REV.
PROJECTION	COLOR VARIATIONS MAY OCCUR	SCALE: NONE	A	43321	NB141207-EH0	B
			CAD FILE: NB141207-EH0.SLDRW	SHEET 1 OF 1		