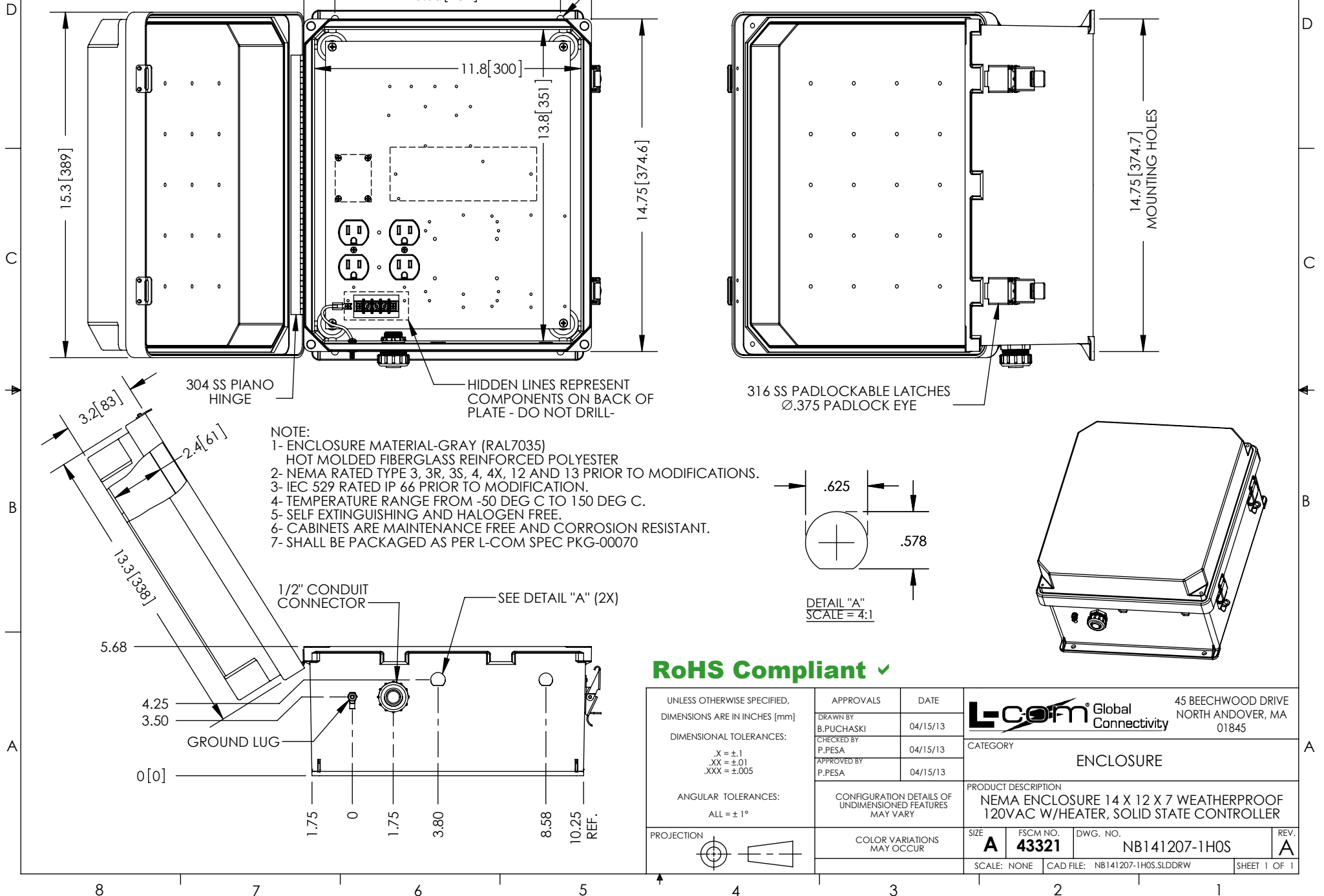


THE INFORMATION CONTAINED IN THIS DRAWING IS THE SOLE PROPERTY OF L-COM, INC. ANY REPRODUCTION IN PART OR WHOLE WITHOUT THE WRITTEN PERMISSION OF L-COM, INC. IS PROHIBITED.

REVISIONS			
REV	DESCRIPTION	DATE	APPROVED
A	INITIAL RELEASE	4/16/13	D.GRIFFIN
-	-	-	-
-	-	-	-



RoHS Compliant ✓

UNLESS OTHERWISE SPECIFIED, DIMENSIONS ARE IN INCHES [mm]  DIMENSIONAL TOLERANCES: .X = ± .1 .XX = ± .01 .XXX = ± .005  ANGULAR TOLERANCES: ALL = ± 1°  PROJECTION 	APPROVALS	DATE	45 BEECHWOOD DRIVE NORTH ANDOVER, MA 01845	
	DRAWN BY B.PUCHASKI	04/15/13		
	CHECKED BY P.PESA	04/15/13	CATEGORY ENCLOSURE	
	APPROVED BY P.PESA	04/15/13	PRODUCT DESCRIPTION NEMA ENCLOSURE 14 X 12 X 7 WEATHERPROOF 120VAC W/HEATER, SOLID STATE CONTROLLER	
CONFIGURATION DETAILS OF UNDIMENSIONED FEATURES MAY VARY		SIZE <b>A</b>	FSCM NO. <b>43321</b>	DWG. NO. NB141207-1H0S
COLOR VARIATIONS MAY OCCUR		SCALE: NONE	CAD FILE: NB141207-1H0S.SLDDRW	REV. <b>A</b>
		SHEET 1 OF 1		