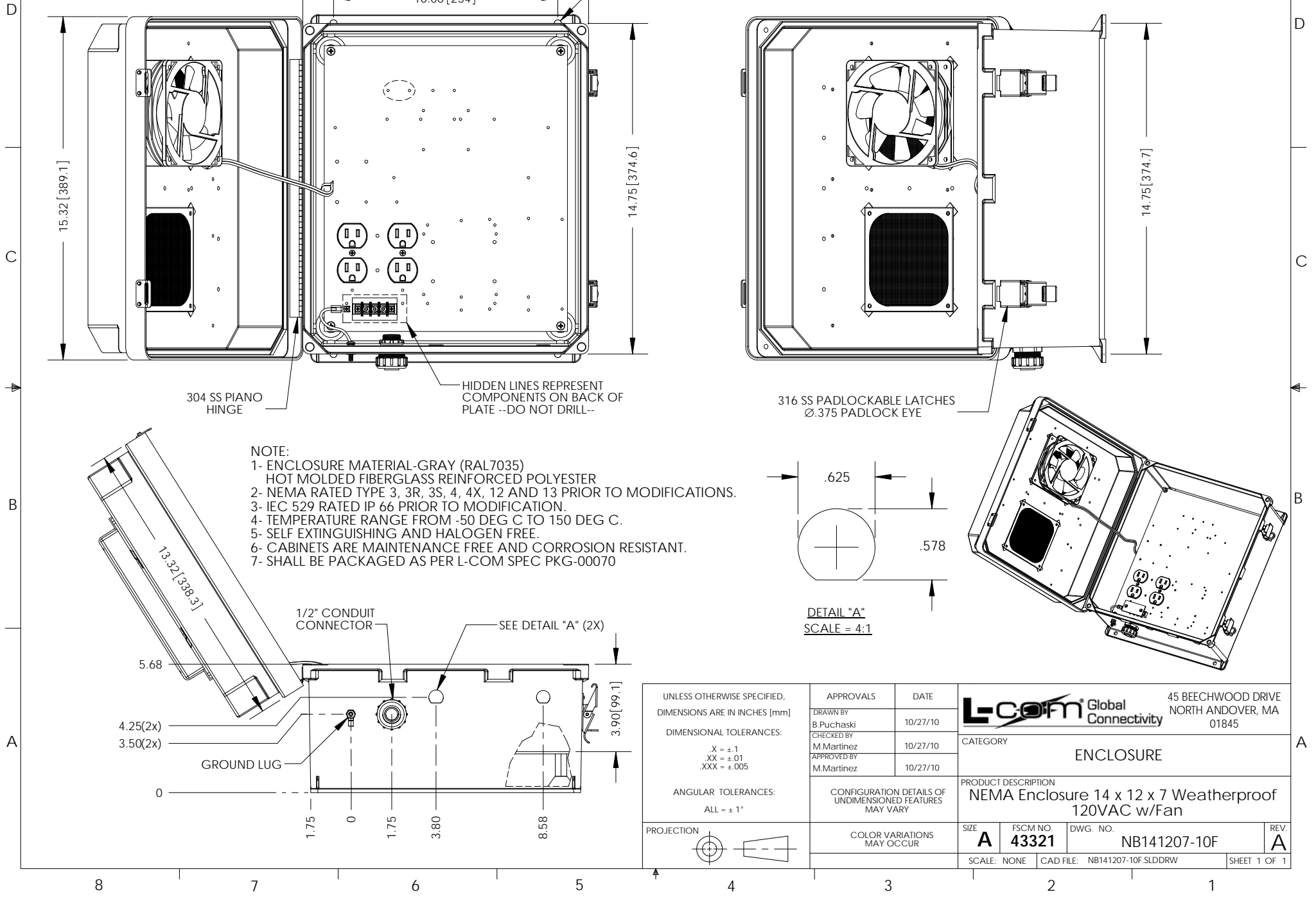


THE INFORMATION CONTAINED IN THIS DRAWING IS THE SOLE PROPERTY OF L-COM, INC. ANY REPRODUCTION IN PART OR WHOLE WITHOUT THE WRITTEN PERMISSION OF L-COM, INC. IS PROHIBITED.

REVISIONS			
REV	DESCRIPTION	DATE	APPROVED
A	Initial Release	10/27/10	B.Puchaski
-	-	-	-
-	-	-	-



UNLESS OTHERWISE SPECIFIED, DIMENSIONS ARE IN INCHES [mm] DIMENSIONAL TOLERANCES: X = ±.1 .XX = ±.01 .XXX = ±.005 ANGULAR TOLERANCES: ALL = ± 1° PROJECTION	APPROVALS	DATE	L-com Global Connectivity 45 BEECHWOOD DRIVE NORTH ANDOVER, MA 01845	
	DRAWN BY B.Puchaski	10/27/10		
	CHECKED BY M.Martinez	10/27/10	CATEGORY ENCLOSURE	
	APPROVED BY M.Martinez	10/27/10	PRODUCT DESCRIPTION NEMA Enclosure 14 x 12 x 7 Weatherproof 120VAC w/Fan	
COLOR VARIATIONS MAY OCCUR	CONFIGURATION DETAILS OF UNDIMENSIONED FEATURES MAY VARY	SIZE A	FSCM NO. 43321	DWG. NO. NB141207-10F
	SCALE: NONE	CAD FILE: NB141207-10F.SLDDRW	SHEET 1 OF 1	