

THE INFORMATION CONTAINED IN THIS DRAWING IS THE SOLE PROPERTY OF L-COM, INC. ANY REPRODUCTION IN PART OR WHOLE WITHOUT THE WRITTEN PERMISSION OF L-COM, INC. IS PROHIBITED.

REVISIONS			
REV	DESCRIPTION	DATE	APPROVED
A	INITIAL RELEASE	2/4/13	D.GRIFFIN
-	-	-	-
-	-	-	-

D

C

B

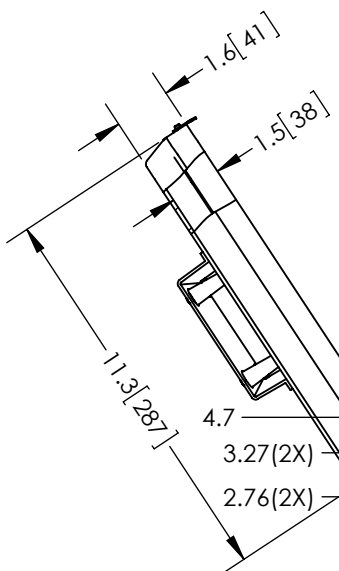
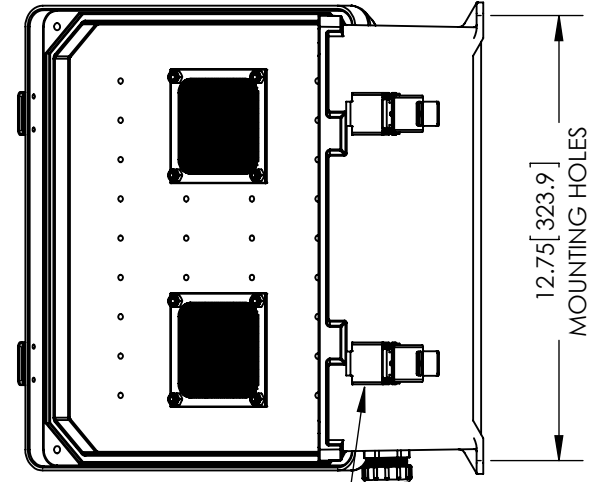
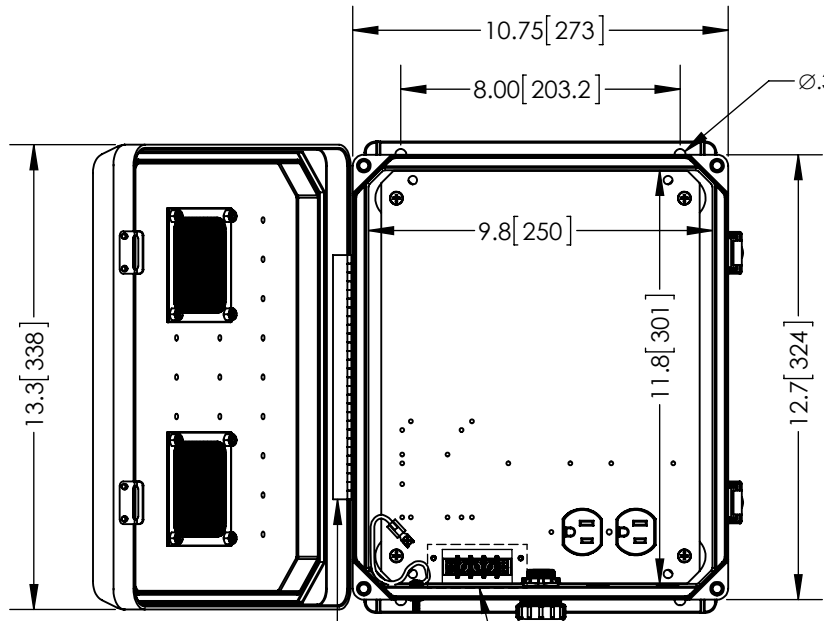
A

D

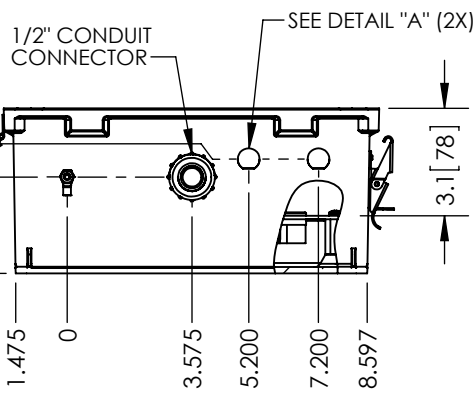
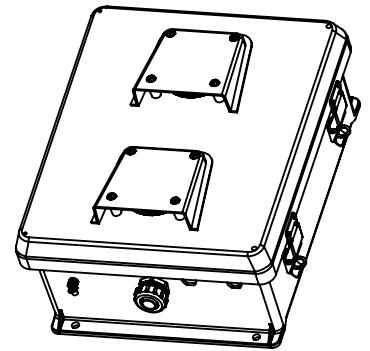
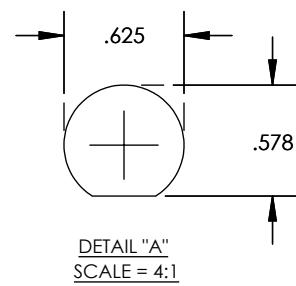
C

B

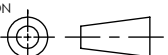

A



- NOTE:
- 1- ENCLOSURE MATERIAL-GRAY (RAL7035) HOT MOLDED FIBERGLASS REINFORCED POLYESTER
  - 2- SELF EXTINGUISHING AND HALOGEN FREE.
  - 3- CABINETS ARE MAINTENANCE FREE AND CORROSION RESISTANT.
  - 4- SHALL BE PACKAGED AS PER L-COM SPEC PKG-00070
  - 5- ALL DIMENSIONS FOR REFERENCE ONLY



RoHS Compliant ✓

UNLESS OTHERWISE SPECIFIED, DIMENSIONS ARE IN INCHES [mm]  DIMENSIONAL TOLERANCES:  .X = ±.1 .XX = ±.01 .XXX = ±.005  ANGULAR TOLERANCES:  ALL = ± 1°  PROJECTION 	APPROVALS	DATE	 Global Connectivity 45 BEECHWOOD DRIVE NORTH ANDOVER, MA 01845			
	DRAWN BY B.PUCHASKI	02/01/13			CATEGORY  ENCLOSURE	
	CHECKED BY P.PESA	02/01/13				
	APPROVED BY P.PESA	02/01/13	PRODUCT DESCRIPTION NEMA ENCLOSURE 12 X 10 X 5 WEATHERPROOF 120VAC / VENTED			
	CONFIGURATION DETAILS OF UNDIMENSIONED FEATURES MAY VARY		SIZE <b>A</b>	FSCM NO. <b>43321</b>	DWG. NO. <b>NB121005-10V</b>	REV. <b>A</b>
	COLOR VARIATIONS MAY OCCUR		SCALE: NONE		CAD FILE: NB121005-10V.SLDDRW	SHEET 1 OF 1