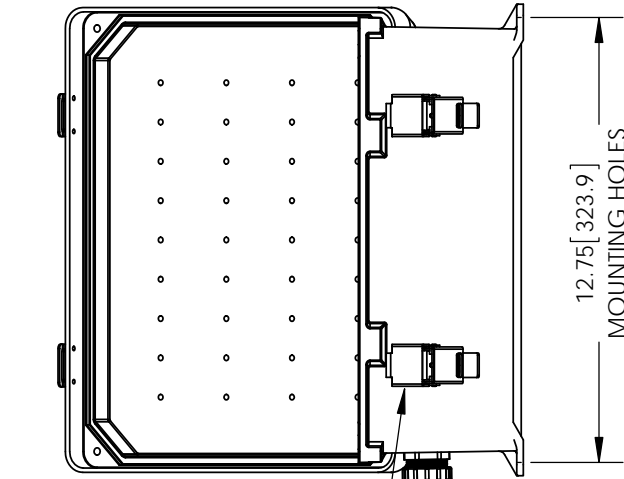
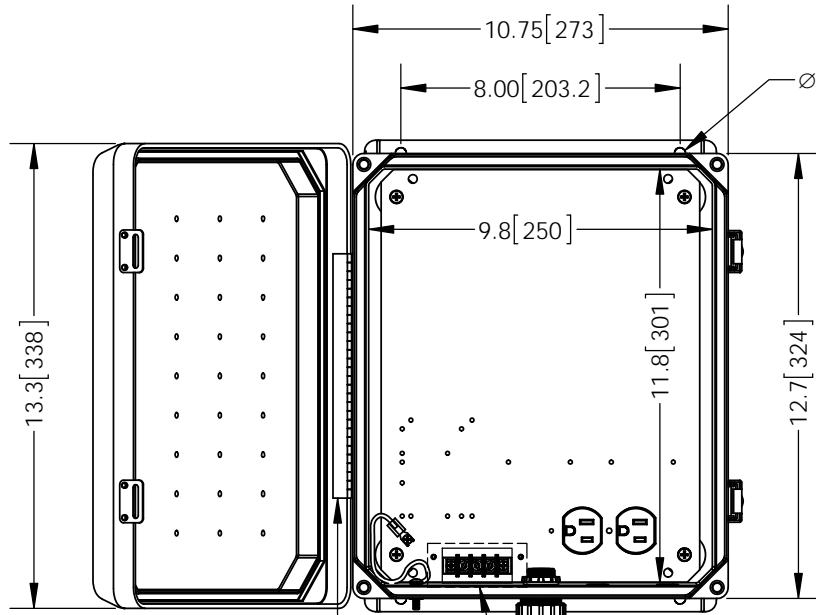


THE INFORMATION CONTAINED IN THIS DRAWING IS THE SOLE PROPERTY OF L-COM, INC. ANY REPRODUCTION IN PART OR WHOLE WITHOUT THE WRITTEN PERMISSION OF L-COM, INC. IS PROHIBITED.

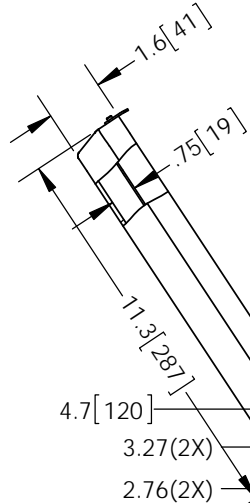
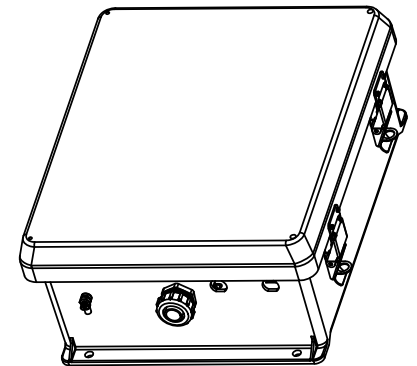
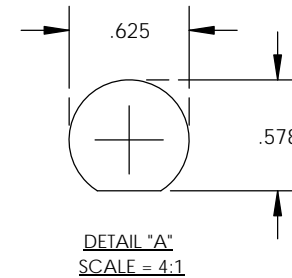
REVISIONS			
REV	DESCRIPTION	DATE	APPROVED
A	INITIAL RELEASE	04/29/13	B.PUCHASKI
-	-	-	-
-	-	-	-



304 SS PIANO HINGE

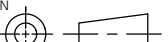

HIDDEN LINES REPRESENT COMPONENTS ON BACK OF PLATE -DO NOT DRILL-

- NOTE:
- 1- ENCLOSURE MATERIAL-GRAY (RAL7035) HOT MOLDED FIBERGLASS REINFORCED POLYESTER
  - 2- SELF EXTINGUISHING AND HALOGEN FREE.
  - 3- CABINETS ARE MAINTENANCE FREE AND CORROSION RESISTANT.
  - 4- SHALL BE PACKAGED AS PER L-COM SPEC PKG-00070
  - 5- ALL DIMENSIONS FOR REFERENCE ONLY



1/2" CONDUIT CONNECTOR  
SEE DETAIL "A" (2X)

RoHS Compliant ✓

UNLESS OTHERWISE SPECIFIED, DIMENSIONS ARE IN INCHES [mm]  DIMENSIONAL TOLERANCES:  X = ± .1 XX = ± .01 XXX = ± .005   ANGULAR TOLERANCES:  ALL = ± 1°   PROJECTION 	APPROVALS	DATE	 45 BEECHWOOD DRIVE NORTH ANDOVER, MA 01845	
	DRAWN BY B.PUCHASKI	04/25/13		
	CHECKED BY P.PESA	04/25/13	CATEGORY  ENCLOSURE	
	APPROVED BY P.PESA	04/25/13		
	CONFIGURATION DETAILS OF UNDIMENSIONED FEATURES MAY VARY	PRODUCT DESCRIPTION  NEMA ENCLOSURE 12 X 10 X 5 WEATHERPROOF 120VAC		
COLOR VARIATIONS MAY OCCUR	SIZE <b>A</b>	FSCM NO. <b>43321</b>	DWG. NO.  NB121005-100	REV. <b>A</b>
	SCALE: NONE		CAD FILE: NB121005-100.SLDDRW	SHEET 1 OF 1