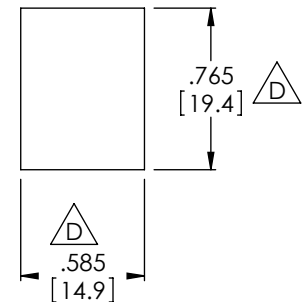
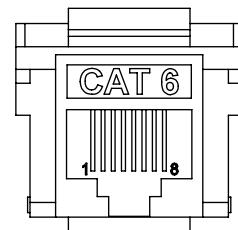
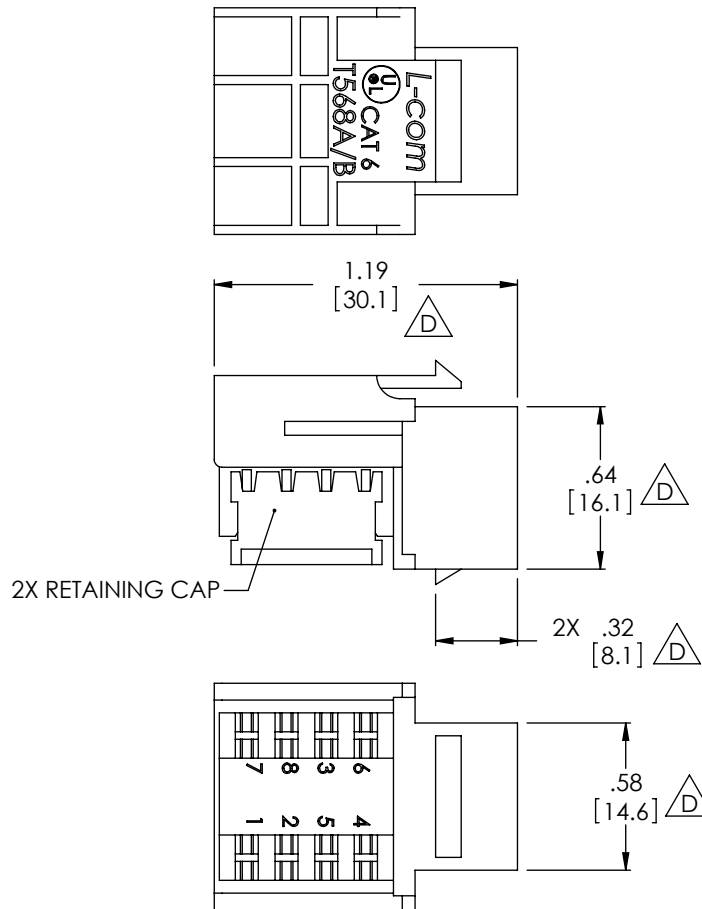


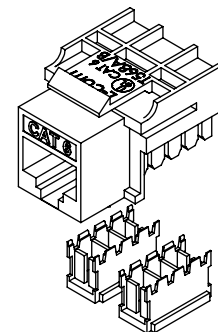
THE INFORMATION CONTAINED IN THIS DRAWING IS THE SOLE PROPERTY OF L-COM, INC. ANY REPRODUCTION IN PART OR WHOLE WITHOUT THE WRITTEN PERMISSION OF L-COM, INC. IS PROHIBITED.

REVISIONS			
REV	DESCRIPTION	DATE	APPROVED
A	INITIAL RELEASE	03/12/04	D.PARHAM
B	ECN2801: UPDATED PIN POSITION NUMBERS ON PCB	04/20/07	D.PARHAM
C	ECN5044: REMOVED IVORY FROM TABLE. UPDATED FORMAT.	09/22/10	DFP
D	ECN5286: REMOVED BLACK & WHITE FROM TABLE. ADDED PKG NOTE & METRIC DIMS	02/03/11	DFP

MODEL	COLOR
MJS110C6-BL	BLUE
MJS110C6-YL	YELLOW



RECOMMENDED
PANEL OPENING



NOTES:

MATERIAL:

HOUSING: ABS, UL94V-0 RATED
CONTACTS: PHOSPHOR BRONZE
IDC PIN: PHOSPHOR BRONZE

FINISH:


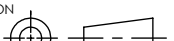
CONTACTS: 15μINCHES GOLD
IDC PINS: NICKEL

ELECTRICAL:

VOLTAGE RATING: 150V
CURRENT RATING: 175 mA

MISCELLANEOUS:

CATEGORY 6 RATED
OPERATING TEMPERATURE: -20°C TO +60°C
COMPLIANT TO MECHANICAL REQUIREMENTS OF TIA-1096
IDC 110 PUNCHDOWN TERMINALS
CONDUCTOR ACCEPTANCE: 24 TO 26AWG
MATING DURABILITY: 500 TIMES
JACK TO BE INDIVIDUALLY PACKAGED IN ACORDANCE
WITH L-COM SPECIFICATION PS-0031.

UNLESS OTHERWISE SPECIFIED, DIMENSIONS ARE IN INCHES [mm] OVERALL CABLE LENGTH TOLERANCE: ≤12 [305] = +1 [25] / -0 >12 [305] ≤60 [1524] = +2 [51] / -0 >60 [1524] ≤120 [3048] = +4 [102] / -0 >120 [3048] ≤300 [7620] = +6 [152] / -0 >300 [7620] = +3% / -0% ALL OTHER DIMENSIONAL TOLERANCES: .X = ±.2 .XX = ±.02 .XXX = ±.005	APPROVALS	DATE	 45 BEECHWOOD DRIVE NORTH ANDOVER, MA 01845	
	DRAWN BY D. PARHAM	1/27/2004		CATEGORY TELECOM/MODULAR
	CHECKED BY B. MAZEJKA	1/28/2004		
	APPROVED BY R. CARRICK	1/28/2004		
CONFIGURATION DETAILS OF UNDIMENSIONED FEATURES MAY VARY	PRODUCT DESCRIPTION CAT 6 RJ45 JACK / 110 PUNCH-DOWN			
	PROJECTION 			
COLOR VARIATIONS MAY OCCUR	SIZE A	FSCM NO. 43321	DWG. NO. MJS110C6	REV. D
	SCALE: NONE		CAD FILE: MJS110C6.SLDDRW	SHEET 1 OF 1