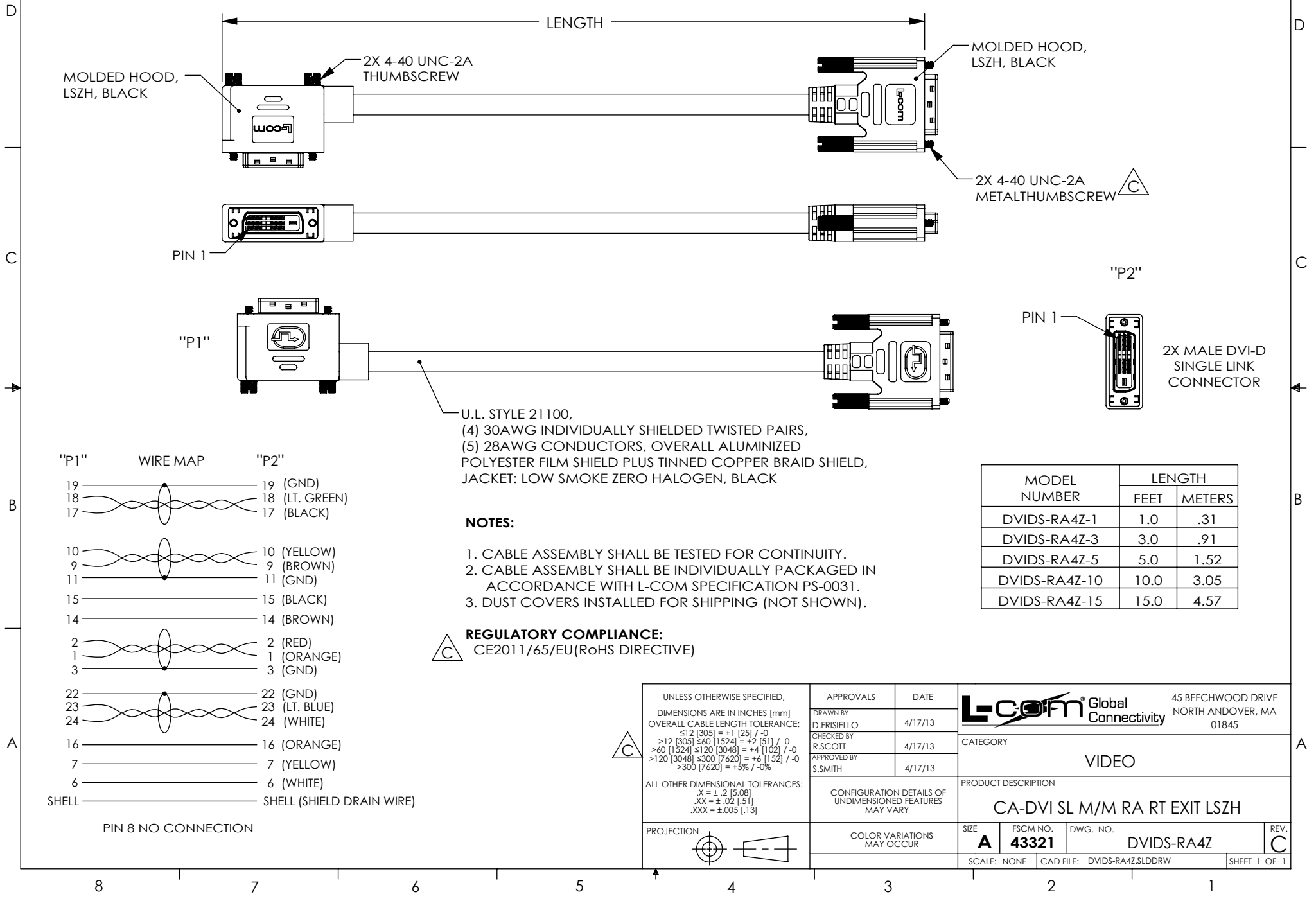


THE INFORMATION CONTAINED IN THIS DRAWING IS THE SOLE PROPERTY OF L-COM, INC.. ANY REPRODUCTION IN PART OR WHOLE WITHOUT THE WRITTEN PERMISSION OF L-COM, INC. IS PROHIBITED.

REVISIONS			
REV	DESCRIPTION	DATE	APPROVED
A	INITIAL RELEASE	4/23/13	D.GRIFFIN
B	ECN 6873: UL21100 WAS UL29276, REVISED ROHS NOTE	6/3/13	D.FRISIELLO
C	ECN8182: UPT DWG FROM MOLDED THUMBSCREW TO METAL THUMBSCREW	11/30/2015	B.ZHANG





WIRE MAP	
"P1"	"P2"
19	19 (GND)
18	18 (LT. GREEN)
17	17 (BLACK)
10	10 (YELLOW)
9	9 (BROWN)
11	11 (GND)
15	15 (BLACK)
14	14 (BROWN)
2	2 (RED)
1	1 (ORANGE)
3	3 (GND)
22	22 (GND)
23	23 (LT. BLUE)
24	24 (WHITE)
16	16 (ORANGE)
7	7 (YELLOW)
6	6 (WHITE)
SHELL	SHELL (SHIELD DRAIN WIRE)
PIN 8 NO CONNECTION	

NOTES:

1. CABLE ASSEMBLY SHALL BE TESTED FOR CONTINUITY.
2. CABLE ASSEMBLY SHALL BE INDIVIDUALLY PACKAGED IN ACCORDANCE WITH L-COM SPECIFICATION PS-0031.
3. DUST COVERS INSTALLED FOR SHIPPING (NOT SHOWN).

REGULATORY COMPLIANCE:
CE2011/65/EU(RoHS DIRECTIVE)

MODEL NUMBER	LENGTH	
	FEET	METERS
DVIDS-RA4Z-1	1.0	.31
DVIDS-RA4Z-3	3.0	.91
DVIDS-RA4Z-5	5.0	1.52
DVIDS-RA4Z-10	10.0	3.05
DVIDS-RA4Z-15	15.0	4.57

UNLESS OTHERWISE SPECIFIED, DIMENSIONS ARE IN INCHES [mm] OVERALL CABLE LENGTH TOLERANCE: ≤12 [305] = +1 [25] / -0 >12 [305] ≤60 [1524] = +2 [51] / -0 >60 [1524] ≤120 [3048] = +4 [102] / -0 >120 [3048] ≤300 [7620] = +6 [152] / -0 >300 [7620] = +5% / -0% ALL OTHER DIMENSIONAL TOLERANCES: .X = ±.2 [5.08] .XX = ±.02 [1.27] .XXX = ±.005 [1.27]	APPROVALS		DATE		 Global Connectivity 45 BEECHWOOD DRIVE NORTH ANDOVER, MA 01845			
	DRAWN BY D.FRISIELLO		4/17/13					
	CHECKED BY R.SCOTT		4/17/13					
	APPROVED BY S.SMITH		4/17/13					
					CATEGORY VIDEO			
	CONFIGURATION DETAILS OF UNDIMENSIONED FEATURES MAY VARY				PRODUCT DESCRIPTION CA-DVI SL M/M RA RT EXIT LSZH			
PROJECTION 	COLOR VARIATIONS MAY OCCUR				SIZE A	FSCM NO. 43321	DWG. NO. DVIDS-RA4Z	REV. C
					SCALE: NONE	CAD FILE: DVIDS-RA4Z.SLDDRW		SHEET 1 OF 1