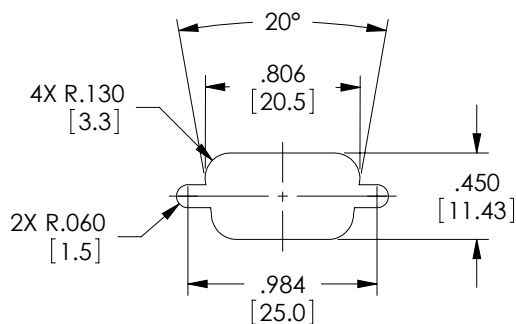
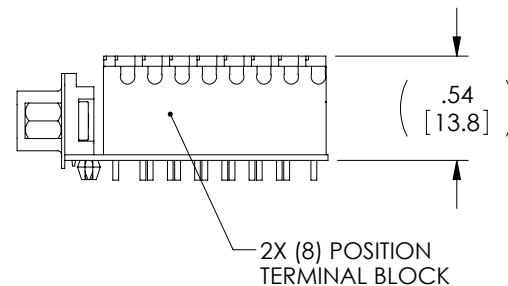
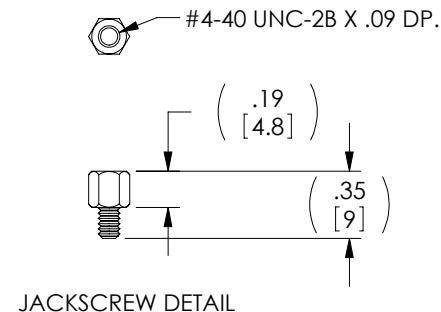
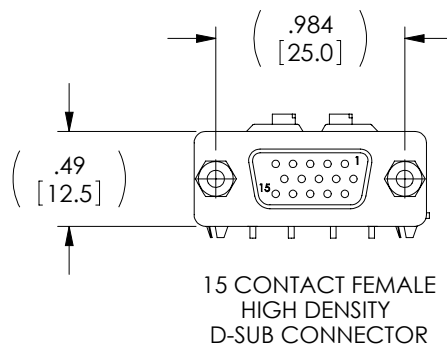
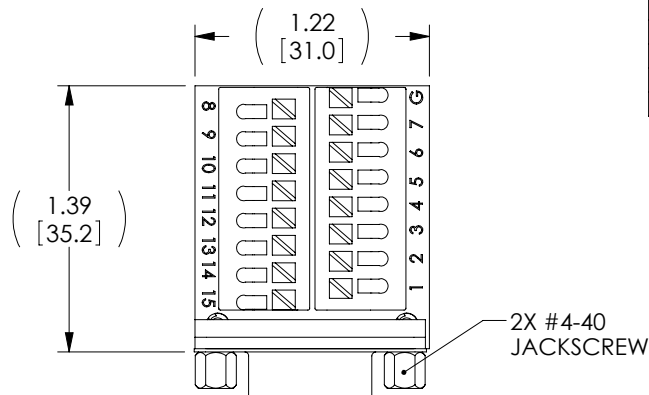


THE INFORMATION CONTAINED IN THIS DRAWING IS THE SOLE PROPERTY OF L-COM, INC. ANY REPRODUCTION IN PART OR WHOLE WITHOUT THE WRITTEN PERMISSION OF L-COM, INC. IS PROHIBITED.

WIRE MAP	
HD15	TERMINAL BLOCK
1	1
2	2
3	3
4	4
5	5
6	6
7	7
8	8
9	9
10	10
11	11
12	12
13	13
14	14
15	15
SHELL	GND



RECOMMENDED PANEL OPENING
(MAX PANEL THICKNESS: 0.06")



NOTES:

1. VOLTAGE RATING: 1000V AC & 500V DC
2. COMPONENT SHALL BE TESTED FOR CONTINUITY.
3. COMPONENT SHALL BE INDIVIDUALLY PACKAGED IN ACCORDANCE WITH L-COM SPEC. PS-0031.

RoHS Compliant ✓

UNLESS OTHERWISE SPECIFIED, DIMENSIONS ARE IN INCHES [mm] OVERALL CABLE LENGTH TOLERANCE: ≤12 [305] = +1 [25] / -0 >12 [305] ≤60 [1524] = +2 [51] / -0 >60 [1524] ≤120 [3048] = +4 [102] / -0 >120 [3048] ≤300 [7620] = +6 [152] / -0 >300 [7620] = +3% / -0% ALL OTHER DIMENSIONAL TOLERANCES: .X = ±.2 .XX = ±.02 .XXX = ±.005 PROJECTION 	APPROVALS	DATE	 45 BEECHWOOD DRIVE NORTH ANDOVER, MA 01845	
	DRAWN BY D. CASTRO	4/22/11		
	CHECKED BY D. PARHAM	4/22/11	CATEGORY DATA	
	APPROVED BY S. SMITH	4/25/11	PRODUCT DESCRIPTION CONN,HB15F FLD TERM SCREWLESS	
CONFIGURATION DETAILS OF UNDIMENSIONED FEATURES MAY VARY		SIZE A	FSCM NO. 43321	DWG. NO. DGSH15FT
COLOR VARIATIONS MAY OCCUR		SCALE: NONE	CAD FILE: DGSH15FT.SLDDRW	REV. A
		SHEET 1 OF 1		