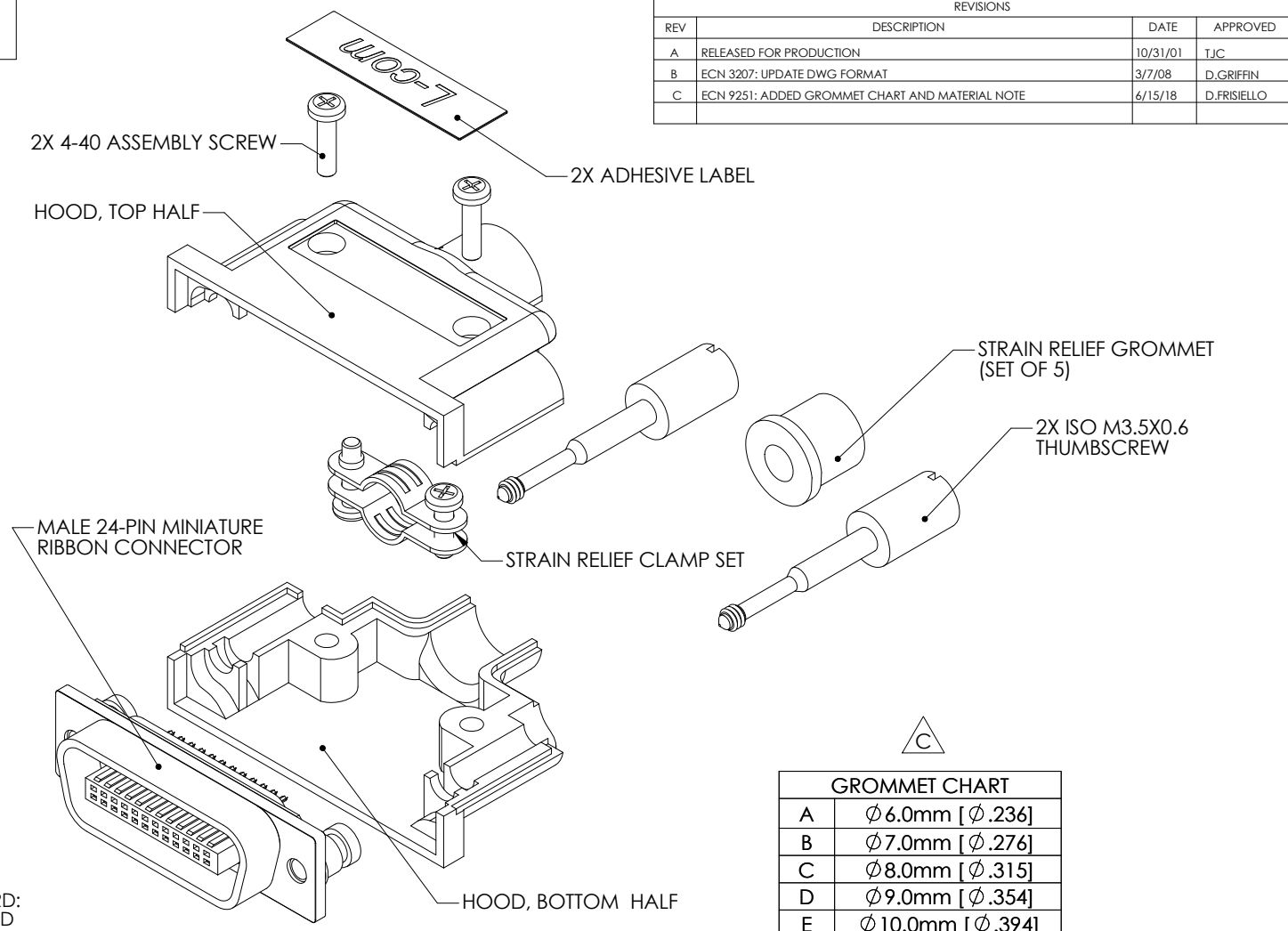


THE INFORMATION CONTAINED IN THIS DRAWING IS THE SOLE PROPERTY OF L-COM, INC. ANY REPRODUCTION IN PART OR WHOLE WITHOUT THE WRITTEN PERMISSION OF L-COM, INC. IS PROHIBITED.

REVISIONS			
REV	DESCRIPTION	DATE	APPROVED
A	RELEASED FOR PRODUCTION	10/31/01	TJC
B	ECN 3207: UPDATE DWG FORMAT	3/7/08	D.GRIFFIN
C	ECN 9251: ADDED GROMMET CHART AND MATERIAL NOTE	6/15/18	D.FRISIELLO



GROMMET CHART	
A	Ø 6.0mm [Ø .236]
B	Ø 7.0mm [Ø .276]
C	Ø 8.0mm [Ø .315]
D	Ø 9.0mm [Ø .354]
E	Ø 10.0mm [Ø .394]

NOTES:

MATERIALS AND FINISHES:

HOOD HALVES AND CONNECTOR FLANGE/GUARD: DIE-CAST ALUMINUM ALLOY, MATTE NICKEL PLATED
 THUMBSCREWS: STEEL, BLACK OXIDE FINISH
 ASSEMBLY SCREWS AND STRAIN RELIEF SET: STEEL, NICKEL PLATED
 CONNECTOR INSULATOR: POLYBUTYLENE THERETHPHLATE, BLUE (94V-0)
 CONNECTOR CONTACTS: BRASS, GOLD PLATED
 CONNECTOR BUSHINGS: STEEL, NICKEL PLATED, TAPPED ISO M3.5X0.6
 GROMMET: RUBBER (SET OF 5 I.D. SIZES); MATERIAL: TPR
 LABELS: POLYESTER

TINNED SOLDER-CUP CONNECTOR TERMINALS ACCEPT 22AWG SOLID AND 24AWG STRANDED WIRE CONDUCTORS.

ASSEMBLED CONNECTOR MATES WITH ALL L-COM IEEE-488 FEMALE CONNECTORS AND MOST SIMILAR RECEPTACLES

PACKAGING:
 ASSEMBLY SHALL BE INDIVIDUALLY PACKAGED IN ACCORDANCE WITH L-COM SPECIFICATION PS-0031.

REGULATORY COMPLIANCE:
 CE2011/65/EU(RoHS DIRECTIVE)

UNLESS OTHERWISE SPECIFIED, DIMENSIONS ARE IN INCHES [mm] OVERALL CABLE LENGTH TOLERANCE: ≤12 [305] = +1 [25] / -0 >12 [305] ≤60 [1524] = +2 [51] / -0 >60 [1524] ≤120 [3048] = +4 [102] / -0 >120 [3048] ≤300 [7620] = +6 [152] / -0 >300 [7620] = +5% / -0% ALL OTHER DIMENSIONAL TOLERANCES: .X = ± .2 [5.08] .XX = ± .02 [51] .XXX = ±.005 [1.3]	APPROVALS DRAWN BY TJC CHECKED BY RC APPROVED BY DFP	DATE 10/29/01 10/29/01 10/29/01	50 HIGH STREET NORTH ANDOVER, MA 01845	
	CONFIGURATION DETAILS OF UNDIMENSIONED FEATURES MAY VARY			CATEGORY IEEE-488
	PROJECTION 	COLOR VARIATIONS MAY OCCUR	SIZE A	FSCM NO. 43321 DWG. NO. CB24SM SCALE: NONE CAD FILE: CB24SM.SLDDRW
			SHEET 1 OF 1	PRODUCT DESCRIPTION CB24SM CONNECTOR/HOOD KIT