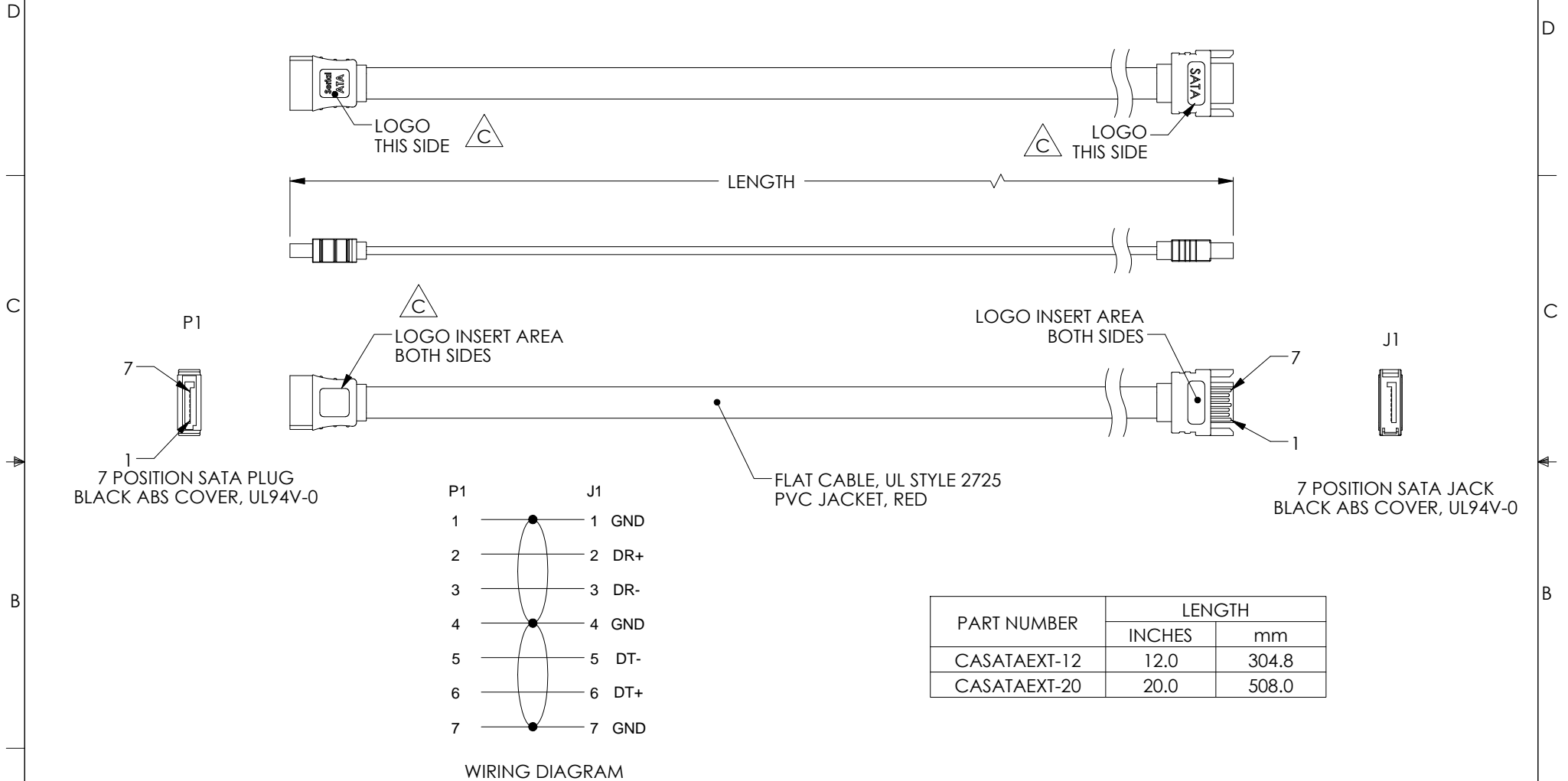
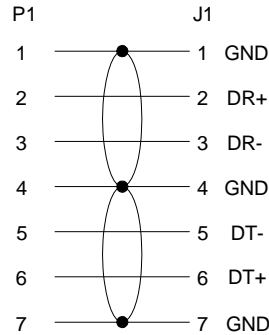


THE INFORMATION CONTAINED IN THIS DRAWING IS THE SOLE PROPERTY OF L-COM, INC.. ANY REPRODUCTION IN PART OR WHOLE WITHOUT THE WRITTEN PERMISSION OF L-COM, INC. IS PROHIBITED.

REVISIONS			
REV	DESCRIPTION	DATE	APPROVED
A	INITIAL RELEASE	5/17/10	D.GRIFFIN
B	ECN 7065: REVISED LOGO'S, ADDED ROHS/CE NOTE	9/17/13	D.FRISIELLO
C	ECN 9040;UPDATE TO NEW LOGO PER SUPPLIER REQUEST,NEW DWG FORMAT	01/09/2018	B.ZHANG



7 POSITION SATA PLUG  
BLACK ABS COVER, UL94V-0



WIRING DIAGRAM

PART NUMBER	LENGTH	
	INCHES	mm
CASATAEXT-12	12.0	304.8
CASATAEXT-20	20.0	508.0

NOTES:

1. CABLE ASSEMBLY SHALL BE TESTED FOR CONTINUITY.
2. CABLE ASSEMBLY SHALL BE INDIVIDUALLY PACKAGED IN ACCORDANCE WITH L-COM PACKAGING SPEC. PS-0031.
3. BOTH SHIELDS AND ALL DRAIN WIRES TIED TOGETHER.



**REGULATORY COMPLIANCE:**  
CE2011/65/EU(RoHS DIRECTIVE)

UNLESS OTHERWISE SPECIFIED, DIMENSIONS ARE IN INCHES [mm] OVERALL CABLE LENGTH TOLERANCE: ≤12 [305] = +1 [25] / -0 >12 [305] ≤60 [1524] = +2 [51] / -0 >60 [1524] ≤120 [3048] = +4 [102] / -0 >120 [3048] ≤300 [7620] = +6 [152] / -0 >300 [7620] = +5% / -0% ALL OTHER DIMENSIONAL TOLERANCES: .X = ±.2 [5.08] .XX = ±.02 [51] .XXX = ±.005 [13] PROJECTION 	APPROVALS	DATE	 50 HIGH STREET NORTH ANDOVER, MA 01845	
	DRAWN BY D. PARHAM	05/12/10		
	CHECKED BY M. MARTINEZ	05/12/2010	CATEGORY HETEROGENOUS	
	APPROVED BY S. SMITH	05/17/2010	PRODUCT DESCRIPTION CBL,SERIAL ATA EXTENSION	
COLOR VARIATIONS MAY OCCUR	SIZE <b>A</b>	FSCM NO. <b>43321</b>	DWG. NO. <b>CASATAEXT</b>	REV. <b>C</b>
	SCALE: NONE		CAD FILE: CASATAEXT.SLDDRW	SHEET 1 OF 1