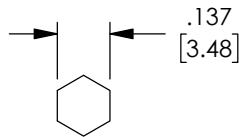


THE INFORMATION CONTAINED IN THIS DRAWING IS THE SOLE PROPERTY OF L-COM, INC. ANY REPRODUCTION IN PART OR WHOLE WITHOUT THE WRITTEN PERMISSION OF L-COM, INC. IS PROHIBITED.

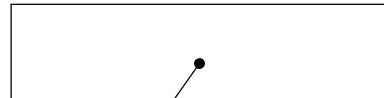


REVISIONS			
REV	DESCRIPTION	DATE	APPROVED
A	INITIAL RELEASE	02/03/04	MCCORMICK
B	ECN# 2028 ADDED SHRINK TUBING AND INSULATOR	04/18/05	MCCORMICK
C	ECN 3155: UPDATE DWG FORMAT	1/18/08	D.GRIFFIN
D	ECN 9220: UPDATE TO NEW VENDOR SPEC SHEET	5/29/18	D.FRISIELLO

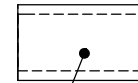
DESCRIPTION	MATERIAL	FINISH
BODY	BRASS	GOLD PLATE
OUTER CONTACT	BERYLLIUM COPPER	GOLD PLATE
INSULATOR	PTFE	-
INNER CONTACT	BRASS	GOLD PLATE
FERRULE	BRASS	GOLD PLATE
SPACER	ACETEL	-
CAP	BRASS	GOLD PLATE
SHRINK TUBE	PE	BLACK



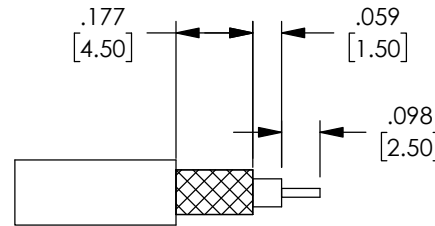
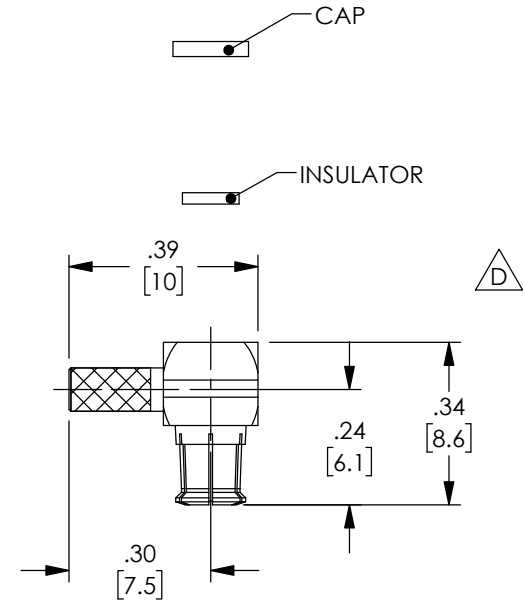
RECOMMENDED FERRULE CRIMP



HEAT SHRINK



FERRULE



RECOMMENDED CABLE STRIPPING

NOTES:

ELECTRICAL:

- IMPEDANCE: 50 OHM
- FREQUENCY RANGE: 0-6 GHz
- VOLTAGE RATING: ≥ 335 V RMS
- INSULATION RESISTANCE: ≥ 1 G Ω
- DIELECTRIC WITHSTANDING VOLTAGE: 750 V RMS
- CONTACT RESISTANCE: CENTER CONTACT: ≤ 5 m Ω
OUTER CONTACT: ≤ 2.5 m Ω

APPLICATION:

RG174, RG188, RG316, LMR100

-- ALL DIMENSIONS ARE FOR REFERENCE ONLY --

COMPONENT ASSEMBLY SHALL BE INDIVIDUALLY PACKAGED IN ACCORDANCE WITH L-COM SPECIFICATION PS-0031.

REGULATORY COMPLIANCE:

CE2011/65/EU (RoHS DIRECTIVE)

UNLESS OTHERWISE SPECIFIED, DIMENSIONS ARE IN INCHES [mm] OVERALL CABLE LENGTH TOLERANCE: ≤ 12 [305] = +1 [25] / -0 >12 [305] ≤ 60 [1524] = +2 [51] / -0 >60 [1524] ≤ 120 [3048] = +4 [102] / -0 >120 [3048] ≤ 300 [7620] = +6 [152] / -0 >300 [7620] = +5% / -0%	APPROVALS	DATE		50 HIGH STREET NORTH ANDOVER, MA 01845
	DRAWN BY C.MCCORMICK	02/03/2004		CATEGORY COAXIAL
ALL OTHER DIMENSIONAL TOLERANCES: .X = $\pm .2$ [5.08] .XX = $\pm .02$ [51] .XXX = $\pm .005$ [1.27]	CHECKED BY D.PARHAM	02/03/2004	PRODUCT DESCRIPTION MCX RA CRIMP PLUG RG174/188/316	
PROJECTION 	APPROVED BY R.CARRICK	02/03/2004	CONFIGURATION DETAILS OF UNDIMENSIONED FEATURES MAY VARY	SCALE: NONE
	COLOR VARIATIONS MAY OCCUR		SIZE A	FSCM NO. 43321
			DWG. NO. BAC508	REV. D
			CAD FILE: BAC508.SLDDRW	SHEET 1 OF 1