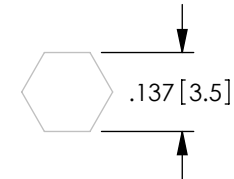
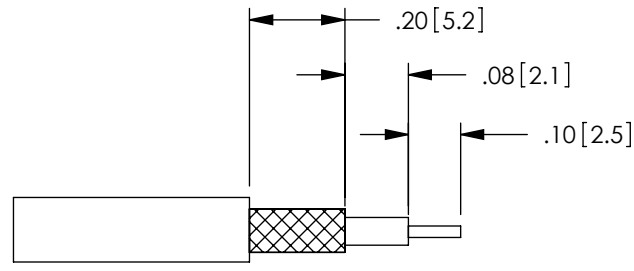
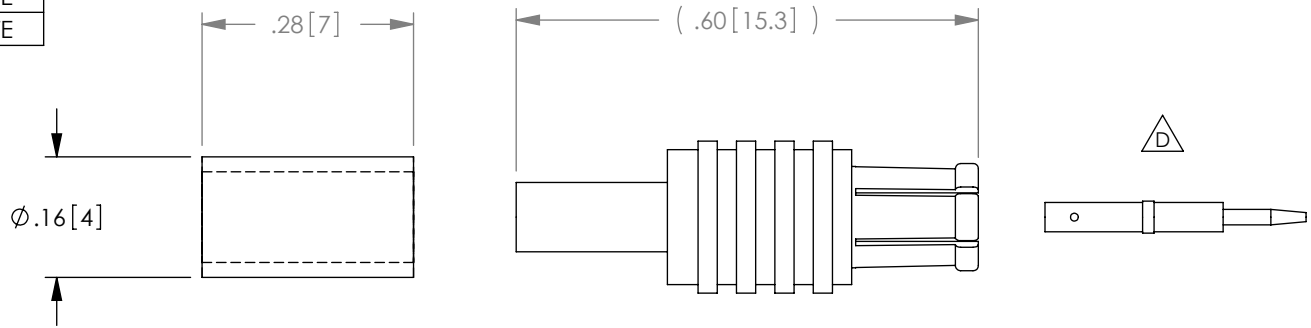


THE INFORMATION CONTAINED IN THIS DRAWING IS THE SOLE PROPERTY OF L-COM, INC., ANY REPRODUCTION IN PART OR WHOLE WITHOUT THE WRITTEN PERMISSION OF L-COM, INC. IS PROHIBITED.

REVISIONS			
REV	DESCRIPTION	DATE	APPROVED
A	INITIAL RELEASE	02/03/04	MCCORMICK
B	ECN 3155: UPDATE DWG FORMAT	1/18/08	D.GRIFFIN
C	ECN 4480: PIN MATERIAL IS NOW BRASS, DIMENSIONAL CHANGES	1/7/10	D.FRISIELLO
D	ECN 5283: SHOWED PIN IN EXPLODED VIEW	1/31/11	D. CASTRO

DESCRIPTION	MATERIAL	FINISH
BODY	BRASS	GOLD PLATE
INSULATOR	PTFE	-
PIN	BRASS	GOLD PLATE
FERRULE	BRASS	GOLD PLATE



**NOTES:**

**ELECTRICAL:**

IMPEDANCE: 50 OHMS  
 FREQUENCY RANGE: DC - 6 GHz  
 VSWR: 1.06 MAX @ DC - 2.5 GHz  
 DIELECTRIC WITHSTANDING VOLTAGE: 1,000 Vrms.  
 DURABILITY: 500 CYCLES MIN. (MATING).

**MISCELLANEOUS:**

COMPONENT ASSEMBLY SHALL BE INDIVIDUALLY PACKAGED IN ACCORDANCE WITH L-COM SPECIFICATION PS-0031.

ALL DIMENSIONS ARE FOR REFERENCE ONLY.

APPLICATIONS: RG174, RG316, RG188, B7805A, URM95.

RECOMMENDED CABLE STRIPPING DIMENSIONS

RECOMMENDED FERRULE CRIMP SIZE

**RoHS Compliant** ✓

UNLESS OTHERWISE SPECIFIED, DIMENSIONS ARE IN INCHES [mm]  DIMENSIONAL TOLERANCES: .X = ±.1 .XX = ±.01 .XXX = ±.005  ANGULAR TOLERANCES: ALL = ± 1°	APPROVALS	DATE		45 BEECHWOOD DRIVE NORTH ANDOVER, MA 01845	
	DRAWN BY C.MCCORMICK	02/03/2004			
	CHECKED BY D.PARHAM	02/03/2004	CATEGORY COAXIAL		
	APPROVED BY R.CARRICK	02/03/2004	PRODUCT DESCRIPTION MCX STRAIGHT PLUG CRIMP		
PROJECTION 	COLOR VARIATIONS MAY OCCUR	SIZE <b>A</b>	FSCM NO. <b>43321</b>	DWG. NO. BAC507	
REF	SCALE: NONE	CAD FILE: BAC507.SLDDRW		REV. <b>D</b>	
				SHEET 1 OF 1	