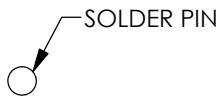
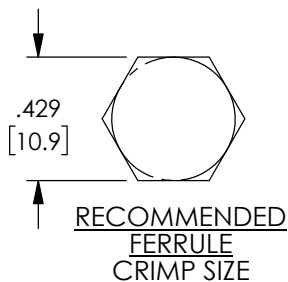
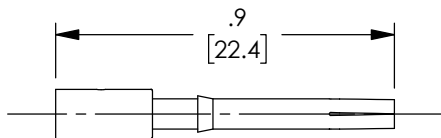
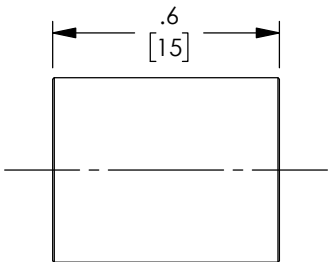


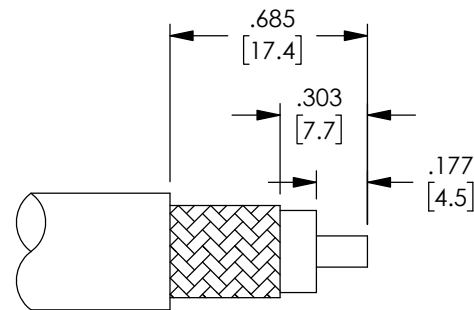
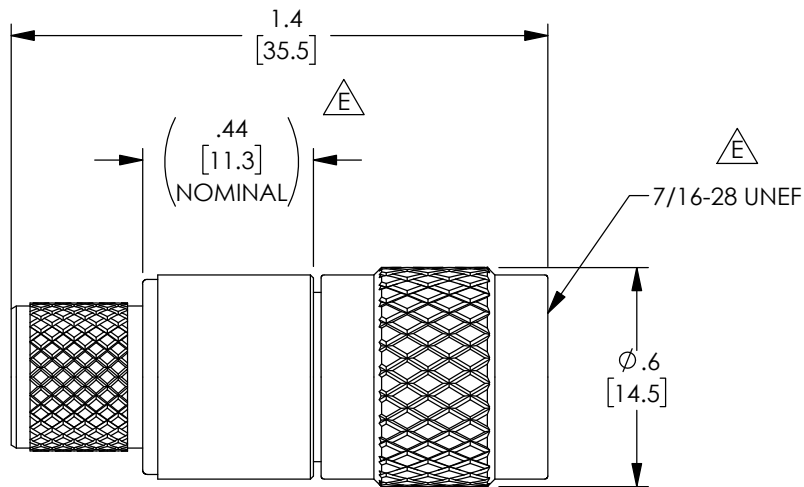
THE INFORMATION CONTAINED IN THIS DRAWING IS THE SOLE PROPERTY OF L-COM, INC. ANY REPRODUCTION IN PART OR WHOLE WITHOUT THE WRITTEN PERMISSION OF L-COM, INC. IS PROHIBITED.

REVISIONS			
REV	DESCRIPTION	DATE	APPROVED
E	ECN 9302: ADDED DIM .44 REF (NOMINAL), ADD THREAD DIM	8/29/18	DFRISIELLO

DESCRIPTION	MATERIAL	FINISH
CENTER CONTACTS	PHOSPHOR BRONZE	GOLD
OUTER CONTACT	BRASS	NICKEL
BODY	BRASS	NICKEL
CRIMP FERRULE	BRASS	NICKEL
GASKET	MVQ	---
INSULATOR	PTFE	---
RETAINING RING	PHOSPHOR BRONZE	NICKEL



RECOMMENDED PIN: -SOLDER- (OR HEX .110 CRIMP)



NOTES:

ELECTRICAL:
 IMPEDANCE: 50 OHMS
 WITHSTAND VOLTAGE: 1500V
 FREQUENCY RANGE: 0~4 GHz
 VSWR: <1.50 @ 0~4 GHz
 DURABILITY: ≥ 500 CYCLE
 CABLE RETENTION: > 40 POUNDS

MISCELLANEOUS:
 COMPONENTS SHALL BE INDIVIDUALLY PACKAGED IN ACCORDANCE WITH L-COM SPECIFICATIONS PS-0031.

-ALL DIMENSIONS ARE FOR REFERENCE ONLY.-

REGULATORY COMPLIANCE:
 CE2011/65/EU(RoHS DIRECTIVE)

UNLESS OTHERWISE SPECIFIED, DIMENSIONS ARE IN INCHES [mm] OVERALL CABLE LENGTH TOLERANCE: ≤12 [305] = +1 [25] / -0 >12 [305] ≤60 [1524] = +2 [51] / -0 >60 [1524] ≤120 [3048] = +4 [102] / -0 >120 [3048] ≤300 [7620] = +6 [152] / -0 >300 [7620] = +5% / -0% ALL OTHER DIMENSIONAL TOLERANCES: .X = ± .2 [5.08] .XX = ± .02 [51] .XXX = ±.005 [1.27]	APPROVALS DRAWN BY BPUCHASKI	DATE 11/11/2009	50 HIGH STREET NORTH ANDOVER, MA 01845	
	CHECKED BY MAUDAS	11/11/2009		CATEGORY COAXIAL
	PROJECTION 	CONFIGURATION DETAILS OF UNDIMENSIONED FEATURES MAY VARY	PRODUCT DESCRIPTION RP-TNC STRAIGHT CRIMP PLUG FOR RG8/LMR400	SIZE A
	COLOR VARIATIONS MAY OCCUR	FSCM NO. 43321	DWG. NO. ARTP-1404	REV. E
SCALE: NONE		CAD FILE: ARTP-1404.SLDDRW		
			SHEET 1 OF 1	