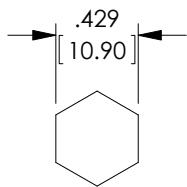
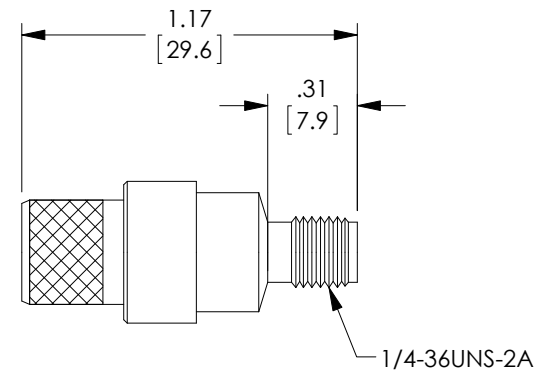
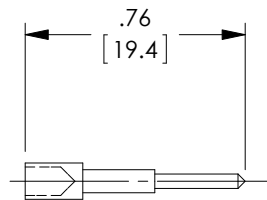
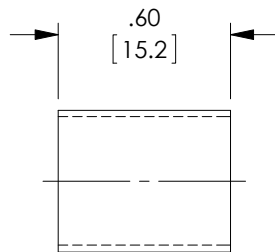


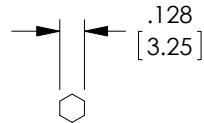
THE INFORMATION CONTAINED IN THIS DRAWING IS THE SOLE PROPERTY OF L-COM, INC. ANY REPRODUCTION IN PART OR WHOLE WITHOUT THE WRITTEN PERMISSION OF L-COM, INC. IS PROHIBITED.

REVISIONS			
REV	DESCRIPTION	DATE	APPROVED
A	INITIAL RELEASE	10/31/06	P.PESA
B	ECN 7999: REDRAW COMPONENT TO NEW VENDOR SPEC	6/30/15	D.FRISIELLO

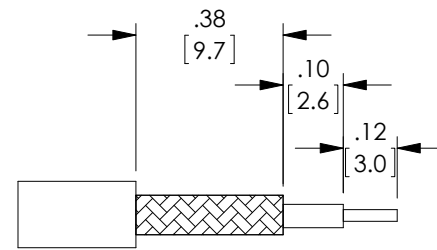
DESCRIPTION	MATERIAL	FINISH
BODY	BRASS	NICKEL PLATE
DIELECTRIC	PTFE	-
CENTER PIN	BRASS	GOLD PLATE
FERRULE	BRASS	NICKEL PLATE
GASKET	RUBBER	-
RETAINING RING	BRASS	NICKEL PLATE
SHELL	BRASS	NICKEL PLATE



RECOMMENDED FERRULE CRIMP SIZE



RECOMMENDED PIN CRIMP SIZE



RECOMMENDED CABLE STRIPPING

NOTES:

ELECTRICAL:

IMPEDANCE: 50 OHMS
 WITHSTAND VOLTAGE: 1000V
 FREQUENCY RANGE: 0 ~ 6.0 GHZ
 VSWR: 1.3 MAX. @ 0~6 GHZ
 DURABILITY: >500 CYCLES
 CABLE RETENTION: >40 POUNDS

COMPONENT SHALL BE INDIVIDUALLY PACKAGED IN ACCORDANCE WITH L-COM SPECIFICATION PS-0031.

ALL DIMENSIONS ARE FOR REFERENCE ONLY.

REGULATORY COMPLIANCE:

CE2011/65/EU (RoHS DIRECTIVE)

UNLESS OTHERWISE SPECIFIED, DIMENSIONS ARE IN INCHES [mm] OVERALL CABLE LENGTH TOLERANCE: ≤12 [305] = +1 [25] / -0 >12 [305] ≤60 [1524] = +2 [51] / -0 >60 [1524] ≤120 [3048] = +4 [102] / -0 >120 [3048] ≤300 [7620] = +6 [152] / -0 >300 [7620] = +5% / -0% ALL OTHER DIMENSIONAL TOLERANCES: .X = ±.2 [5.08] .XX = ±.02 [51] .XXX = ±.005 [1.27]	APPROVALS DRAWN BY D.FRISIELLO CHECKED BY K.BURGNER APPROVED BY K.BURGNER	DATE 6/30/15 7/1/15 7/1/15	45 BEECHWOOD DRIVE NORTH ANDOVER, MA 01845
	CATEGORY COAXIAL		PRODUCT DESCRIPTION CON,RP-SMA JACK CRIMP, 400 SERIES CABLE
	CONFIGURATION DETAILS OF UNDIMENSIONED FEATURES MAY VARY		
	PROJECTION 	COLOR VARIATIONS MAY OCCUR	SIZE A
DWG. NO. ARSJ-1404		REV. B	SCALE: NONE CAD FILE: ARSJ-1404.SLDDRW SHEET 1 OF 1