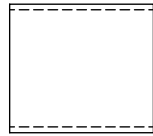


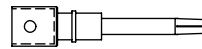
THE INFORMATION CONTAINED IN THIS DRAWING IS THE SOLE PROPERTY OF L-COM, INC. ANY REPRODUCTION IN PART OR WHOLE WITHOUT THE WRITTEN PERMISSION OF L-COM, INC. IS PROHIBITED.

REVISIONS			
REV	DESCRIPTION	DATE	APPROVED
B	ECN 4709: UPDATED DRAWING AND NEW FORMAT	4/28/10	D.FRISIELLO
C	ECN 4752: REVISED FREQUENCY RANGE TO 6 GHz	5/19/10	D.FRISIELLO
D	ECN 7404: UPDATED PACKAGING, ROHS AND FORMAT	4/23/14	D. CASTRO

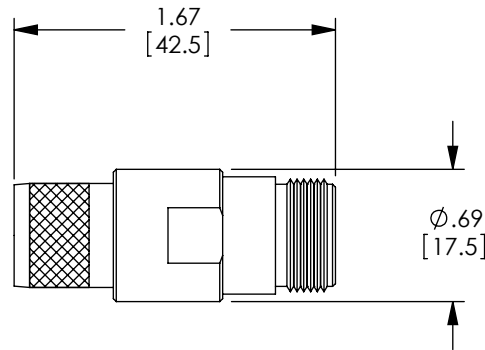
DESCRIPTION	MATERIAL	FINISH
BODY	BRASS	NICKEL PLATE
DIELECTRIC	TFE	-
CENTER PIN	BRASS	GOLD PLATE
FERRULE	BRASS	NICKEL PLATE



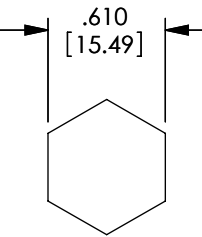
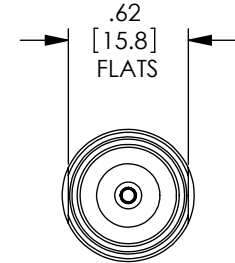
FERRULE



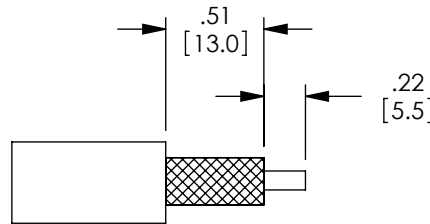
CENTER PIN
(SOLDER TYPE)



BODY



RECOMMENDED
FERRULE CRIMP



RECOMMENDED
CABLE STRIPPING

NOTES:

ELECTRICAL:
 IMPEDANCE: 50 OHMS
 FREQUENCY RANGE: DC ~ 6 GHz
 VOLTAGE RATING: 1500 VOLTS PEAK
 DIELECTRIC WITHSTANDING VOLTAGE: 2500 VOLTS RMS

PACKAGING:
 COMPONENT SHALL BE INDIVIDUALLY PACKAGED IN ACCORDANCE WITH L-COM SPECIFICATION PS-0031.

MISCELLANEOUS:
 CABLE RETENTION: 80 LBS. PULL.
 APPLICATION: LMR600, AND EQUIVALENT.
 ALL DIMENSIONS ARE FOR REFERENCE ONLY.

REGULATORY COMPLIANCE:
 CE2011/65/EU (RoHS DIRECTIVE)

UNLESS OTHERWISE SPECIFIED, DIMENSIONS ARE IN INCHES [mm] OVERALL CABLE LENGTH TOLERANCE: ≤12 [305] = +1 [25] / -0 >12 [305] ≤60 [1524] = +2 [51] / -0 >60 [1524] ≤120 [3048] = +4 [102] / -0 >120 [3048] ≤300 [7620] = +6 [152] / -0 >300 [7620] = +5% / -0%	APPROVALS	DATE		45 BEECHWOOD DRIVE NORTH ANDOVER, MA 01845
	DRAWN BY D.FRISIELLO	4/28/10		
ALL OTHER DIMENSIONAL TOLERANCES: .X = ± .2 [5.08] .XX = ± .02 [5.1] .XXX = ± .005 [1.3]	CHECKED BY K.BURGNER	4/28/10	CATEGORY COAXIAL	
	APPROVED BY K.BURGNER	4/28/10	PRODUCT DESCRIPTION CON, N-FEMALE CRIMP LMR600	
PROJECTION 	CONFIGURATION DETAILS OF UNDIMENSIONED FEATURES MAY VARY	COLOR VARIATIONS MAY OCCUR	SIZE A	FSCM NO. 43321
			DWG. NO. ANF-1610	REV. D
			SCALE: NONE	CAD FILE: ANF-1610.SLDDRW
				SHEET 1 OF 1